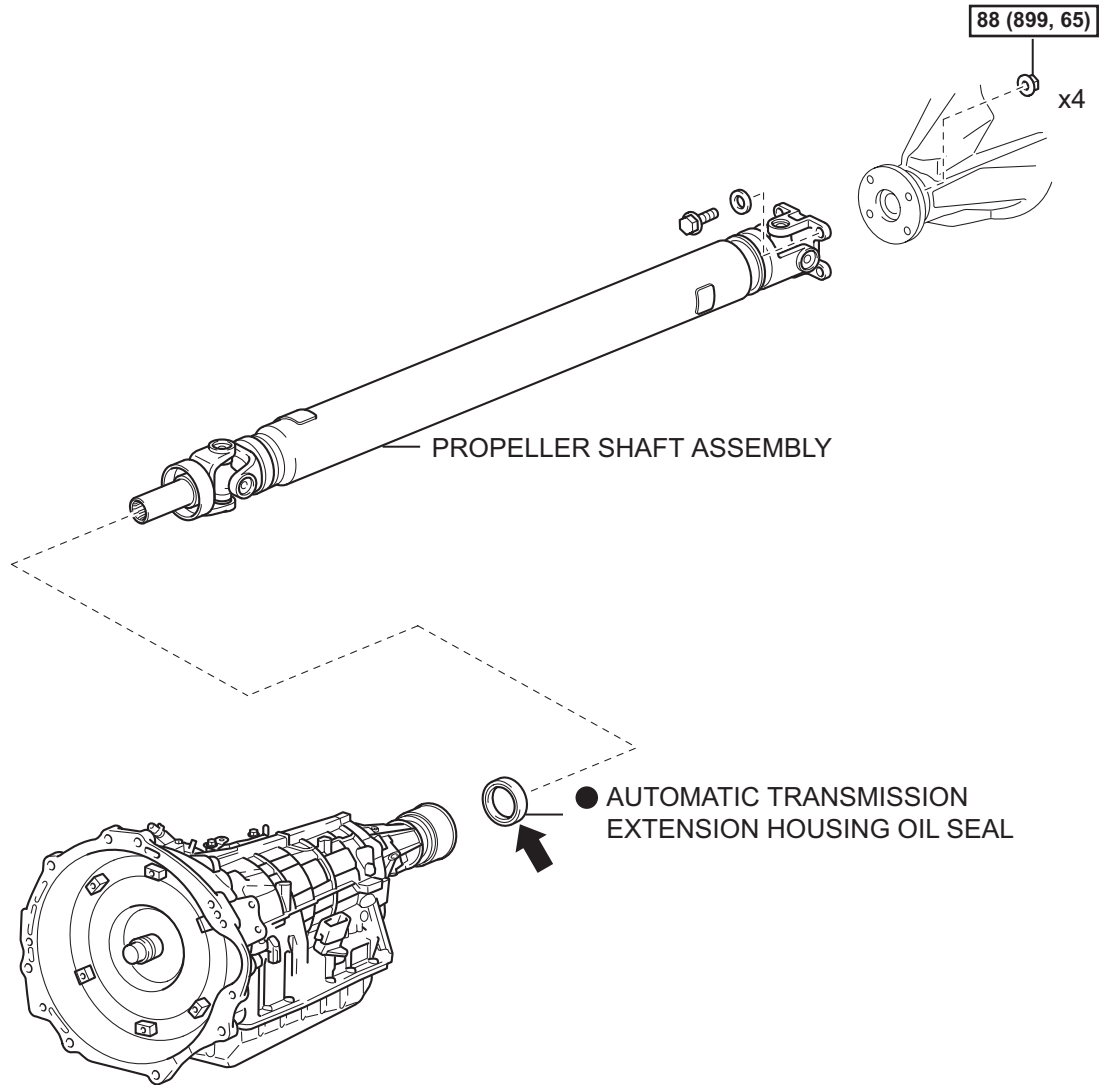


EXTENSION HOUSING REAR OIL SEAL

COMPONENTS

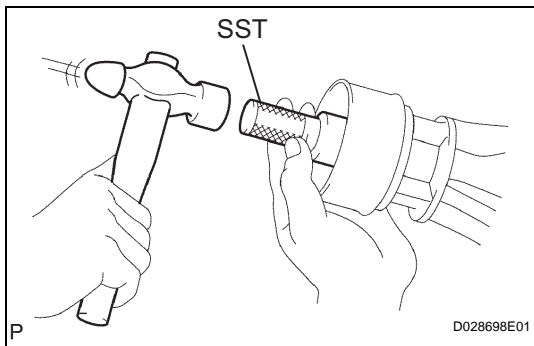
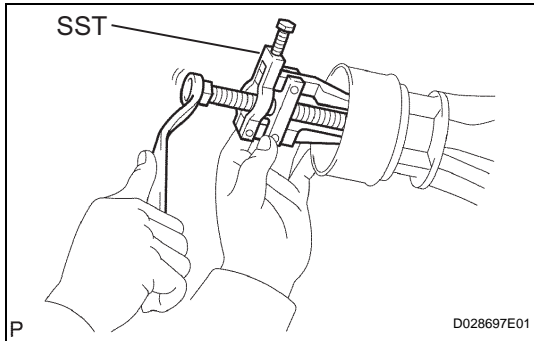


N*m (kgf*cm, ft*lb) : Specified torque

● Non-reusable part ← Apply MP grease

REMOVAL

1. **REMOVE PROPELLER SHAFT ASSEMBLY** (See page [PR-9](#))
2. **DRAIN AUTOMATIC TRANSMISSION FLUID**
 - (a) Remove the drain plug and gasket, and drain ATF.
 - (b) Install a new gasket and the drain plug.
Torque: 28 N*m (285 kgf*cm, 21 ft.*lbf)
3. **REMOVE AUTOMATIC TRANSMISSION EXTENSION HOUSING OIL SEAL**
 - (a) Using SST, remove the oil seal.
SST 09308-00010



INSTALLATION

1. **INSTALL AUTOMATIC TRANSMISSION EXTENSION HOUSING OIL SEAL**
 - (a) Coat the lip of the oil seal with MP grease.
 - (b) Using SST and a hammer, carefully tap in a new oil seal in as far as possible.
SST 09325-40010
Oil seal depth from flat end:
5.4 to 5.8 mm (0.213 to 0.228 in.)
2. **INSTALL PROPELLER SHAFT ASSEMBLY** (See page [PR-14](#))
3. **ADJUST AUTOMATIC TRANSMISSION FLUID**
(See page [AT-140](#))